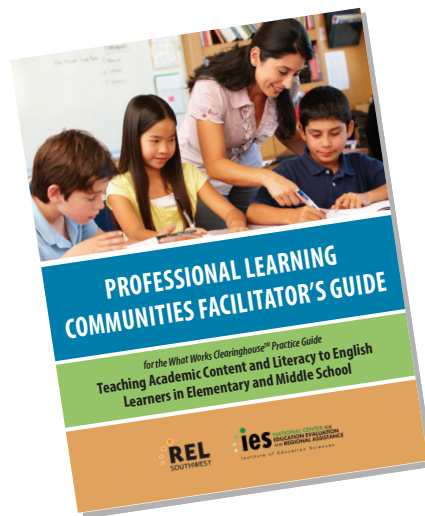


Professional Learning Communities Facilitator's Guide



The *Professional Learning Communities Facilitator's Guide* is designed to assist teacher teams in applying the four evidence-based recommendations in the *Teaching Academic Content and Literacy to English Learners in Elementary and Middle School* educator's practice guide, produced by the What Works Clearinghouse.

- 1. Academic vocabulary:** Teach a set of academic vocabulary words intensively across several days using a variety of instructional activities
- 2. Content-area instruction:** Integrate oral and written English language instruction into content-area teaching
- 3. Structured writing instruction:** Provide regular, structured opportunities to develop written language skills
- 4. Small-group intervention:** Provide small-group instructional intervention to students struggling in areas of literacy and English language development



- ▶ Activities and content for 8 PLC sessions
- ▶ 31 handouts
- ▶ 23 videos

The facilitator's guide employs a five-step lesson cycle that encourages professional learning communities to debrief, define, explore, experiment, and reflect and plan. Educators will build their knowledge of the strategies in the English learner practice guide through a variety of activities, such as analyzing reading selections and discussing teaching vignettes.

Video Series

- ▶ **4 introductory videos** cover the practice guide recommendations
 - ▶ **19 classroom videos** show actual instruction at three grade levels: 2–3 (combination), 4, and 6–8 (newcomers)
 - » Pre-Teaching Vocabulary*
 - » Activities to Promote Word Learning
 - » Providing Review
 - » Word Parts and Cognates
 - » Using Videos to Anchor Instruction
 - » Completing a Graphic Organizer*
 - » Using Graphic Organizers in Writing*
- * most popular topics

Visit the Institute of Education Sciences website to download the facilitator's guide:

<https://ies.ed.gov/ncee/edlabs/regions/southwest/plc.asp>

Visit the REL Southwest website to access playlists of the 23 videos:

http://relsouthwest.sedl.org/resources/tools_products/reports_guides/plc_guide/plc_vids.html